



for a greener tomorrow

## FA Application Package iQ Monozukuri ANDON



Solving issues of process management and information distribution in the production site  
Improve productivity by sharing information between workers!

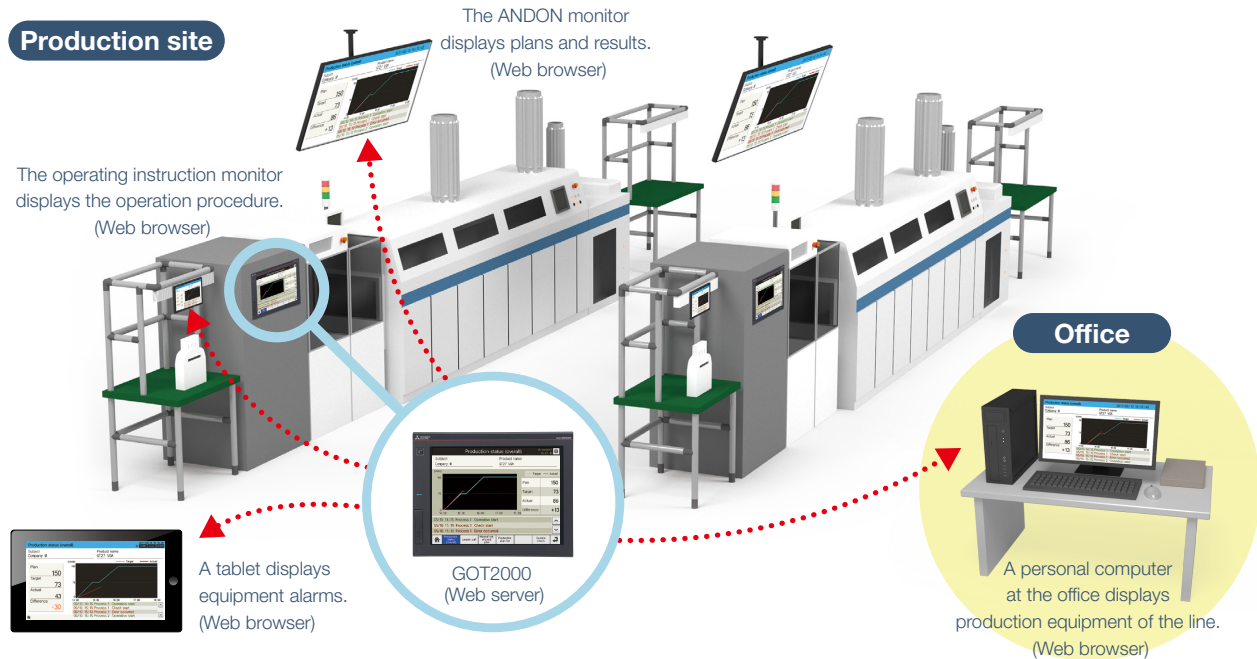




# What is iQ Monozukuri ANDON?

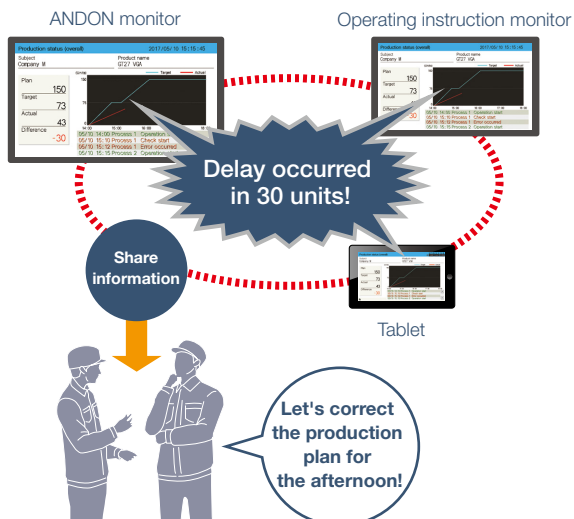
This simple ANDON\* package easily enables visualization of production sites using GOT2000 and a general-purpose web browser. Information obtained from production equipment is displayed on the monitor for ANDON via GOT2000, allowing sharing of the production site information to enable visualization.

\* ANDON system visualizes information (production status, alarms) that is obtained from production equipment, sharing the information among site workers, a manager, and a maintenance personnel.



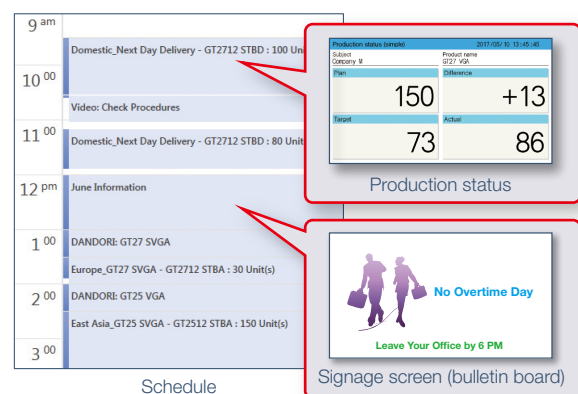
## Sharing information to facilitate work

By sharing information among site workers, site manager, and the maintenance personnel at the office, operation processes can be reviewed and corrected smoothly in the event of a problem.



## Easily display production plans and bulletin boards without technical knowledge of ANDON

The dedicated setting tool (Contents Publisher) allows you to set/change the display of ANDON screens even without programming knowledge for configuring the ANDON system.



## Making remote maintenance easy

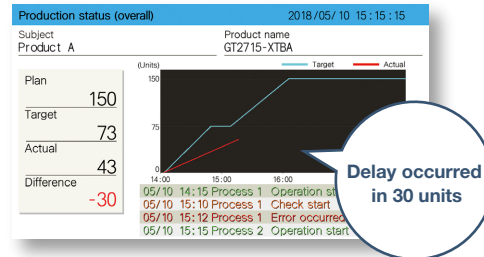
The production status and error handling methods can be displayed on an office computer or a tablet in a remote location.



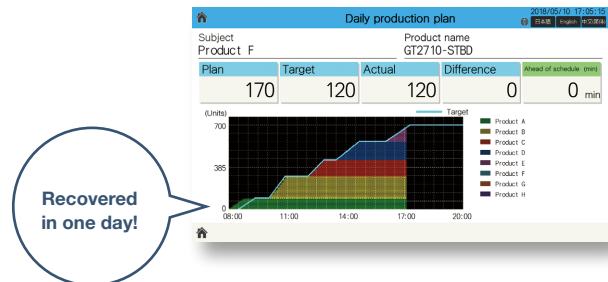
## Visualize production with graphical display

The production status of multiple products are displayed in a list and a progress chart. Visualizing the production plan and actual volume per day enables you to catch problems at an early stage.

Production status per product



Production status per day (multiple products)



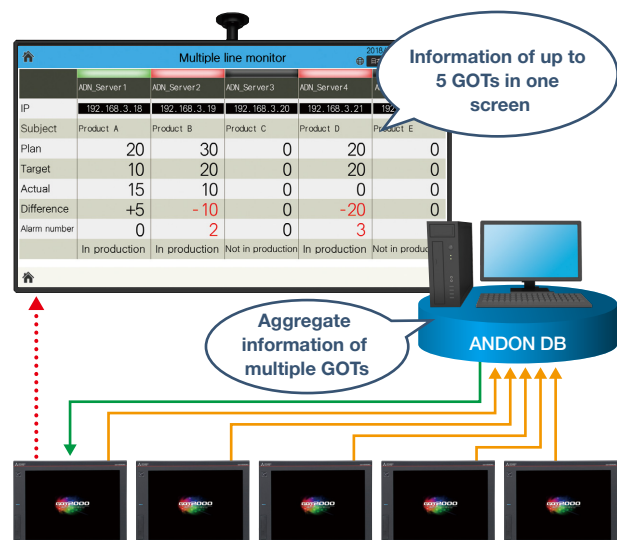
## Various screen templates reduce cost for screen design

The screens frequently used at production sites are provided as various templates, such as Production status screen, DANDORI screen, and Uptime status screen. (See page 6)

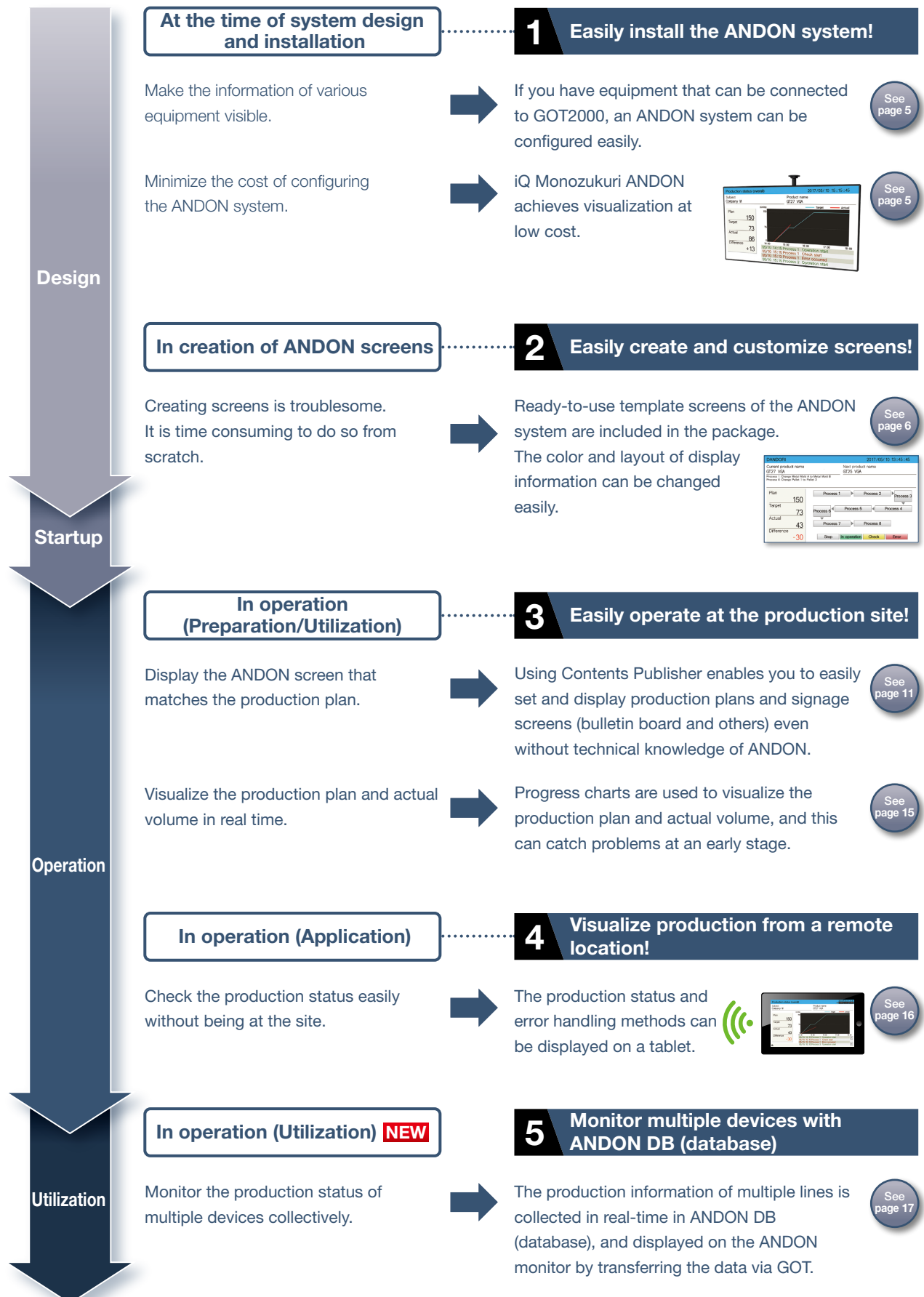


## Monitor multiple devices with ANDON DB (database) **NEW**

The production information of multiple lines is collected in real-time in ANDON DB (database), and displayed on the ANDON monitor by transferring the data via GOT.



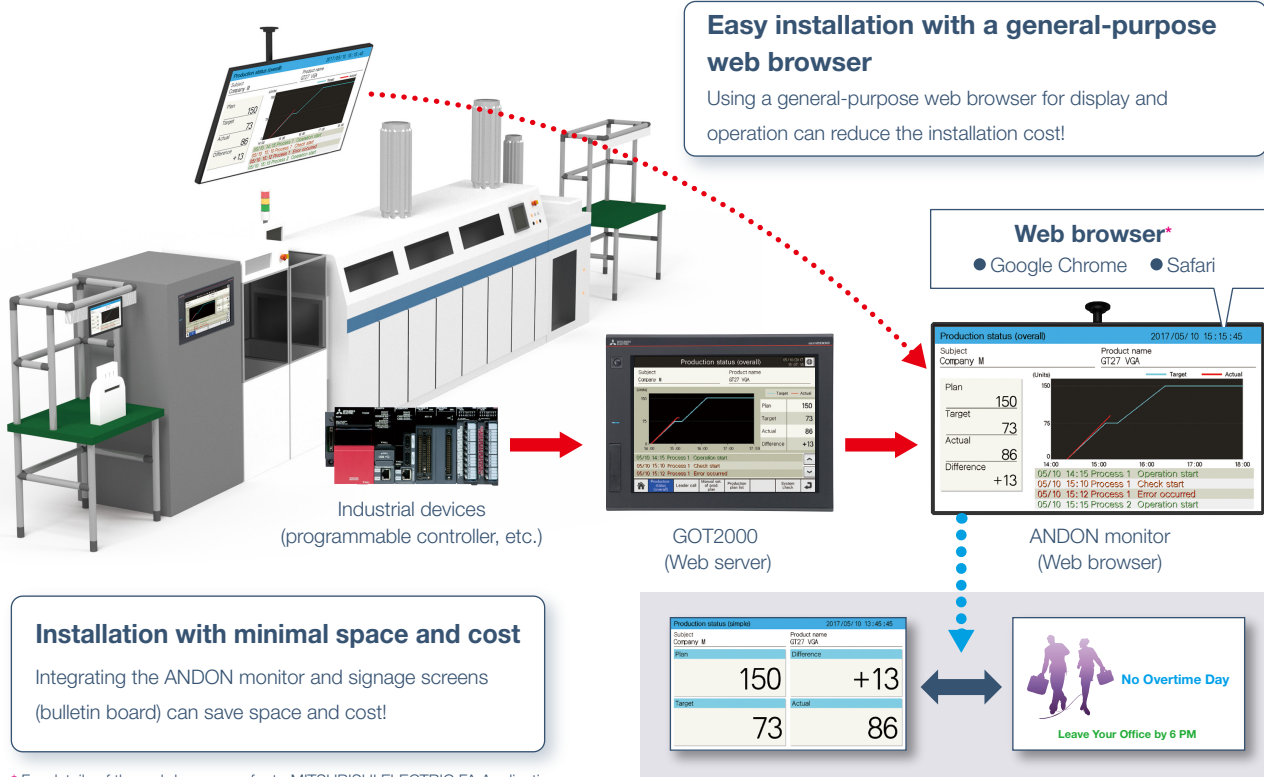
# iQ Monozukuri ANDON solves issues at the production site!





# 1 Easily install the ANDON system!

If you have equipment that can be connected to GOT2000, an ANDON system can be configured easily.



\* For details of the web browser, refer to MITSUBISHI ELECTRIC FA Application Package iQ Monozukuri ANDON Operating Manual SH(NA)-081688ENG.

## System configuration example <File mode>



\* For the system configuration of the DB (database) mode [NEW], please refer to page 18.

\*3 Cannot be used with GT2505 or GT25 handy models.

## 2 Easily create and customize screens!

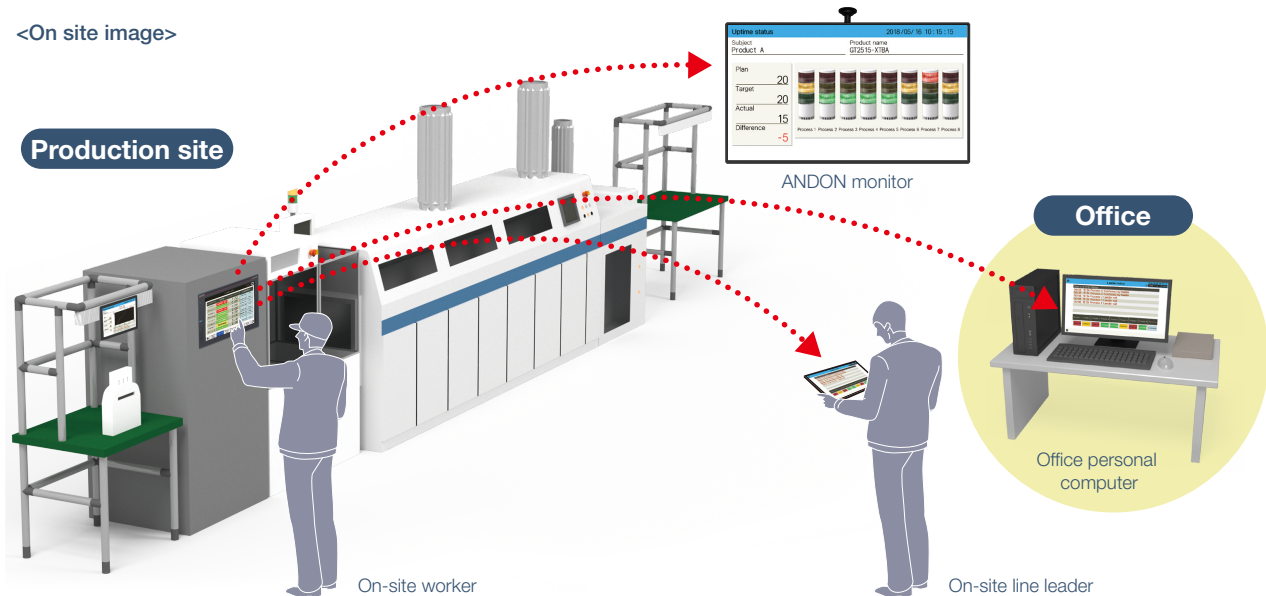
### Template screens of the ANDON system are included in the package

#### Template screen

The screens frequently used at production sites are provided as templates, such as Production status screen, DANDORI\* screen, and Uptime status screen. They can be used as screens to operate the on-site GOT (Web server) or as screens for ANDON display. Template screens are easily customized by using the screen design software for GOT (GT Works3).

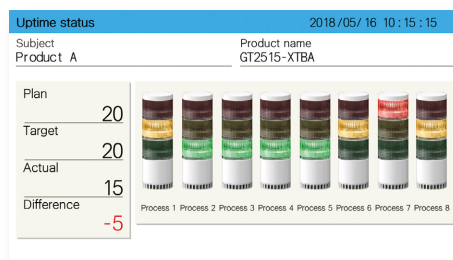
\* DANDORI means replacing a production tool and machine or changing settings when switching products to be produced.

<On site image>



### ■ Uptime status screen **NEW**

This screen shows the uptime status of each production line by three-color indicator lamps. The colors of the lamps change according to the uptime status at the production site so that you can visually check the production status quickly.



### ■ Leader call screen/Leader notice screen **NEW**

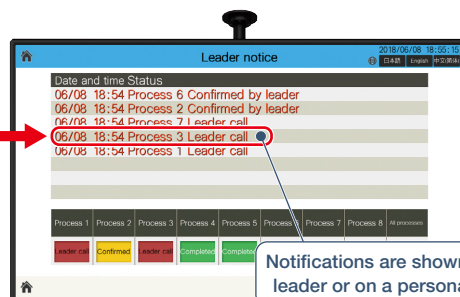
In this screen, you can call the leaders at the production site through the on-site GOT. The operators can call the leader/maintenance leaders without leaving the production site so that they can take corrective actions quickly and reduce downtime of the equipment.

Leader call screen: GOT (on site)

Leader notice screen: ANDON screen/tablet screen (on site, in the office)



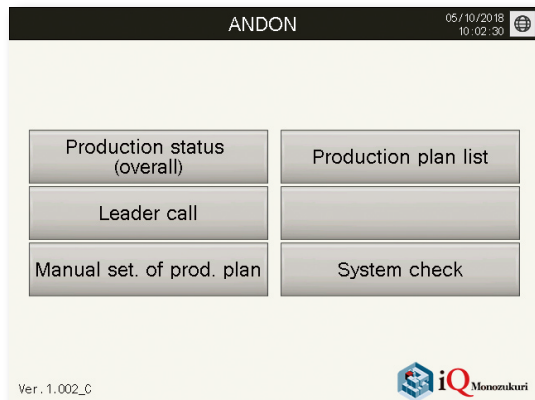
Touch the on-site GOT and call the leader



Notifications are shown on a tablet of the on-site leader or on a personal computer in your office.

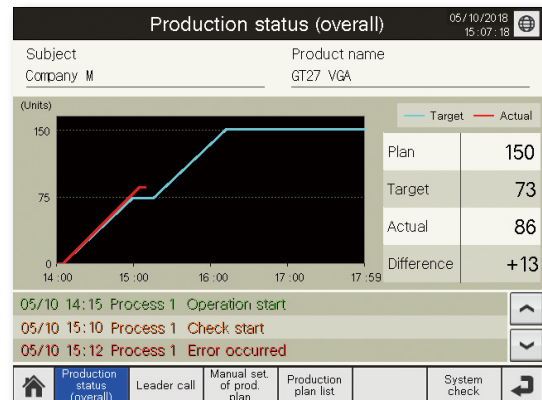
## ■ Screens for use on on-site GOT (Web server)

### Main screen



This screen is used to switch to each screen.

### Production status (overall) screen



This screen is used to display the production results in numerical value and as a graph (progress chart). Also, events and alarm occurrence status are listed.

### Leader call screen

NEW

Equipment	Status	Time after confirmation	Operation
Process 1	Leader call	1 : 12	Leader call Clear
Process 2	Completed	0 : 00	Leader call Clear
Process 3	Leader call	5 : 56	Leader call Clear
Process 4	Completed	0 : 00	Leader call Clear
Process 5	Completed	0 : 00	Leader call Clear
Process 6	Completed	0 : 00	Leader call Clear
Process 7	Confirmed	5 : 30	Leader call Clear
Process 8	Completed	0 : 00	Leader call Clear

The bottom navigation bar includes buttons for 'Production status (overall)', 'Leader call', 'Manual set. of prod. plan', 'Production plan list', and 'System check'.

From the on-site GOT (Web server), you can call the leader for each process and confirm response conditions on this screen. (See page 6)

### Production plan manual settings screen

NEW

Manual set. of prod. plan

Start settings You can operate. Production plan registered OK

Subject Product A Set the plan

Product name GT2715-XTEA Start production

Planned number 20

Cycle time 1.2 Complete production

Adjustment time 80

Select stored pattern: Search ABCDEFGHIJKLMNOP

No.	Stored pattern
1	Pattern1
2	Pattern2
3	Pattern3
4	Pattern4
5	Pattern5

Operation after selection:

Share Store

Change stored pattern name Pattern\_0516 Change

The bottom navigation bar includes buttons for 'Production status (overall)', 'Leader call', 'Manual set. of prod. plan', 'Production plan list', and 'System check'.

This screen is for setting the production plan from the GOT (Web server). You can enter the production plan for each product. (See page 14)

### Production plan list screen

NEW

Subject	Plan	Actual	Target	Difference
Product A	20	15	20	-5

	Subject	Production number	Planned time	Actual time	Progression rate
		Plan	Start	End	
1	Product A	20	09 : 00	11 : 00	08 : 30 00 : 00 75
2	Product B	20	11 : 00	13 : 00	00 : 00 00 : 00 0
3	Product C	30	13 : 00	14 : 30	00 : 00 00 : 00 0
4	Product D	30	14 : 30	16 : 00	00 : 00 00 : 00 0
5	Product E	20	16 : 00	17 : 00	00 : 00 00 : 00 0
6	Product F	10	17 : 00	17 : 30	00 : 00 00 : 00 0
7	Product G	20	17 : 30	18 : 30	00 : 00 00 : 00 0
8	Product H	10	18 : 30	19 : 00	00 : 00 00 : 00 0

The bottom navigation bar includes buttons for 'Production status (overall)', 'Leader call', 'Manual set. of prod. plan', 'Production plan list', and 'System check'.

This screen will display the data acquired from Contents Publisher or ANDON DB as a list. Displays the details for production plan name, number of production, actual time and progression rate.

### System check screen

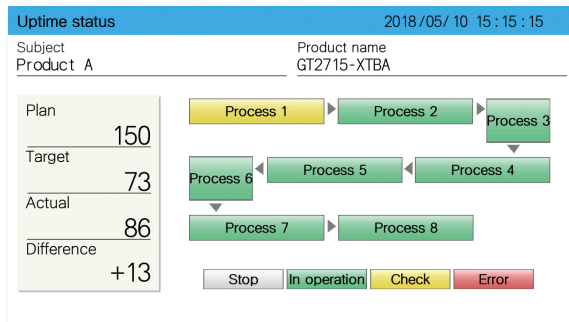
Client name	Connection status	IP address
Client 1	Connected	192.168. 3. 18
Client 2	Connected	192.168. 3. 19
Client 3	Not connected	192.168. 3. 20
Client 4	Connected	192.168. 3. 21
Client 5	Not connected	192.168. 3. 22

The bottom navigation bar includes buttons for 'Production status (overall)', 'Leader call', 'Manual set. of prod. plan', 'Production plan list', and 'System check'.

This screen is used to check the connection status between the GOT (Web server) and the client (display terminal).

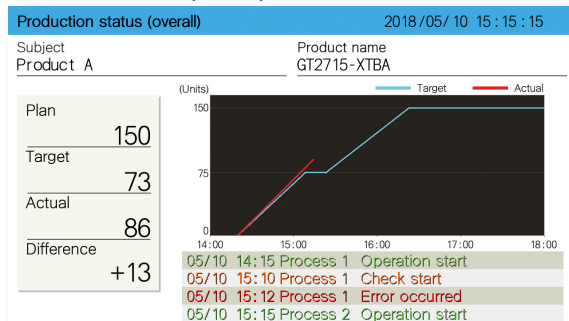
## Template screens for ANDON

### Uptime status screen



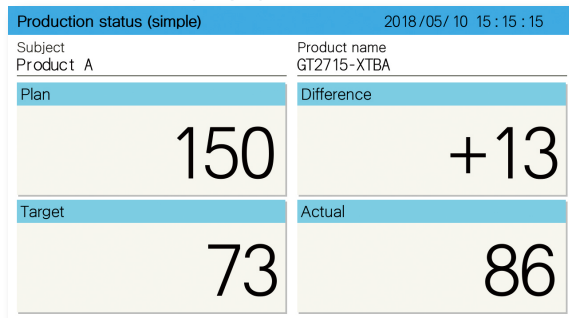
This screen displays the production results of the production line in operation in numerical values, and also displays the status of various processes in different colors.

### Production status (overall) screen



This screen displays the target quantity and production results graphically in a progress chart, which can be used to check progress and production delays. Events and alarm occurrence status can be checked on the same screen. (See page 15)

### Production status (simple) screen



As with the general ANDON screen, this screen displays the production status in numerical values only. Numerical values are enlarged to enhance the visibility of the production status.

### User alarm history screen

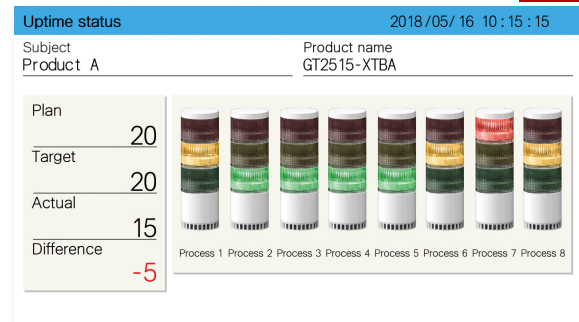
User alarm history 2018/06/08 11:15:15

Occurred	Comment	Restored
06/08 11:06	user error 1	06/08 11:11
06/08 11:06	user error 2	06/08 11:11
06/08 11:06	user error 3	06/08 11:11
06/08 11:06	user error 4	06/08 11:11
06/08 11:08	user error 5	06/08 11:11
06/08 11:08	user error 6	06/08 11:11
06/08 11:08	user error 7	06/08 11:11
06/08 11:08	user error 8	06/08 11:11

This screen is used to display the user alarm history on a client (display terminal). Displays the list of the alarms (such as errors of devices during operation) occurred in the production line.

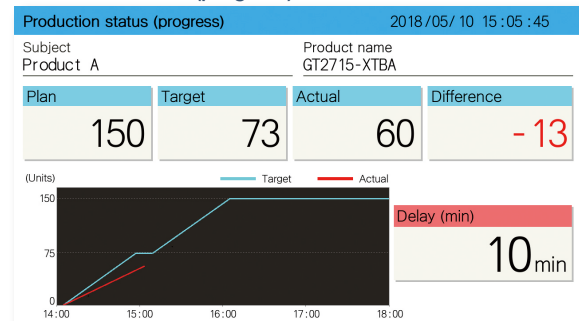
### Uptime status screen

NEW



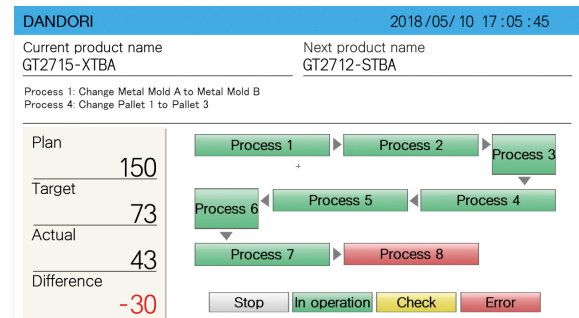
This screen is used to display the uptime status of the production line. Display each process status via the lamp.

### Production status (progress) screen



In addition to graphs in progress charts, this screen displays ahead of schedule time or delays in numerical values. Even though the site area is large, the numerical values are displayed large so that they can be seen from a distance.

### DANDORI screen



This screen displays messages necessary for DANDORI and the product names before and after DANDORI.

### ANDON alarm history screen

Andon alarm history 2018/06/08 16:30:15

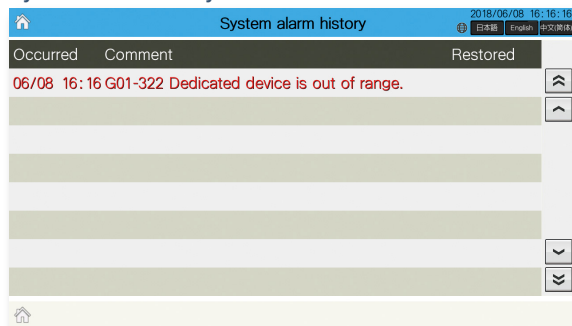
Occurred	Comment	Restored
06/08 16:25	A GOT system alarm has occurred. Please confir	06/08 16:30
06/08 16:25	The data transfer from Contents Publisher has b	06/08 16:30
06/08 16:25	Unable to read the reference time file as it is eith	06/08 16:30
06/08 16:25	Unable to read the uptime-file as it is either miss	06/08 16:30
06/08 16:28	Unable to read the slideshow definition file as it i	06/08 16:30
06/08 16:28	Unable to read the production plan file as it is ei	06/08 16:30
06/08 16:28	Unable to read the signage file as it is either mis	06/08 16:30
06/08 16:28	Unable to read the display language holding file,	06/08 16:30

This screen is used to display the ANDON alarm history on a client (display terminal). Displays the list of the alarms occurred in the ANDON function.



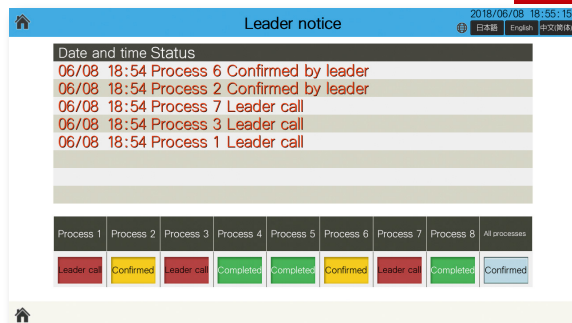
## ■ Template screens for ANDON

### System alarm history screen



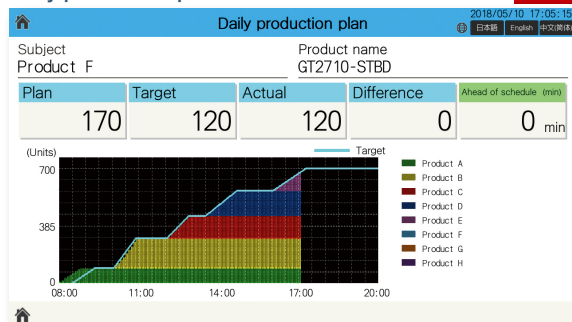
This screen is used to display the system alarm history on a client (display terminal) for the alarms occurred in the GOT (Web server). Displays the list of the system alarms that have occurred in the GOT (Web server).

### Leader notice screen



This screen is used to display the call status of the leader on a client (display terminal). (See page 6)

### Daily production plan screen



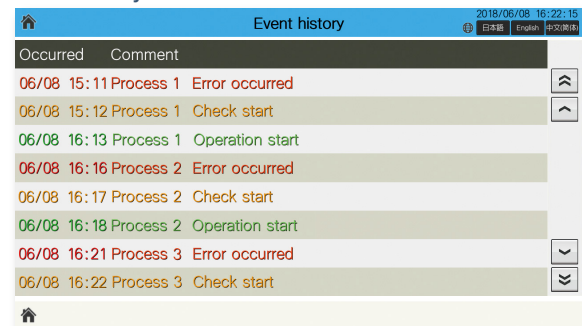
This screen displays multiple products' production plans and production results as numerical values and in a progress chart. (See page 15)

### Multiple line monitor screen

	ADN_Server1	ADN_Server2	ADN_Server3	ADN_Server4	ADN_Server5
IP	192.168.3.18	192.168.3.19	192.168.3.20	192.168.3.21	192.168.3.22
Subject	Product A	Product B	Product C	Product D	Product E
Plan	20	30	0	20	0
Target	10	20	0	20	0
Actual	15	10	0	0	0
Difference	+5	-10	0	-20	0
Alarm number	0	2	0	3	0
	In production	In production	Not in production	In production	Not in production

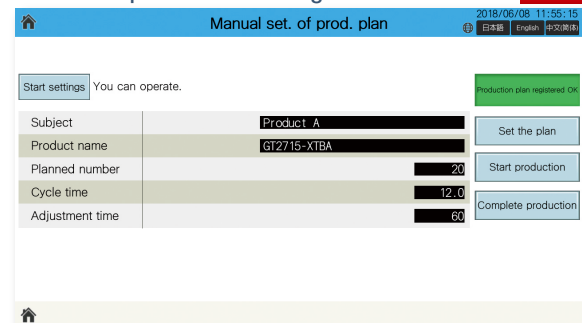
This screen displays the production status of the GOT (Web server) that is assigned to an IP address from ANDON DB (database). (See page 17)

### Event history screen



This screen displays a list of the events (such as start and stop operation of the equipment) that occurred in the production line.

### Production plan manual settings screen



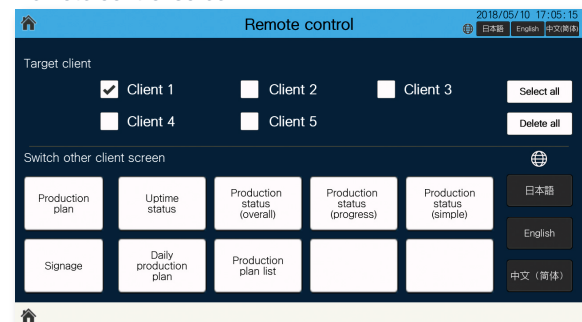
Operation screen to manually set the production plan from a client (tablet).

### Production plan list screen

Subject	Production number	Planned time	Actual time	Progression rate	Plan
1 Product A	20	09:00	11:00	100	10
2 Product B	20	11:00	13:00	100	10
3 Product C	30	13:00	14:30	100	10
4 Product D	30	14:30	16:00	100	10
5 Product E	20	16:00	17:00	100	10
6 Product F	10	17:00	16:58	10	1
7 Product G	20	17:30	18:30	0	-9
8 Product H	20	18:30	19:00	0	-9

This screen displays the status of that day's production plan. Displays the details for production plan name, number of production, actual time and progression rate. (See page 15)

### Remote control screen



This screen is used to switch among other client screens (display terminals) by remote control. Select a client (display terminal) and switch a display screen or a display language. (See page 14)

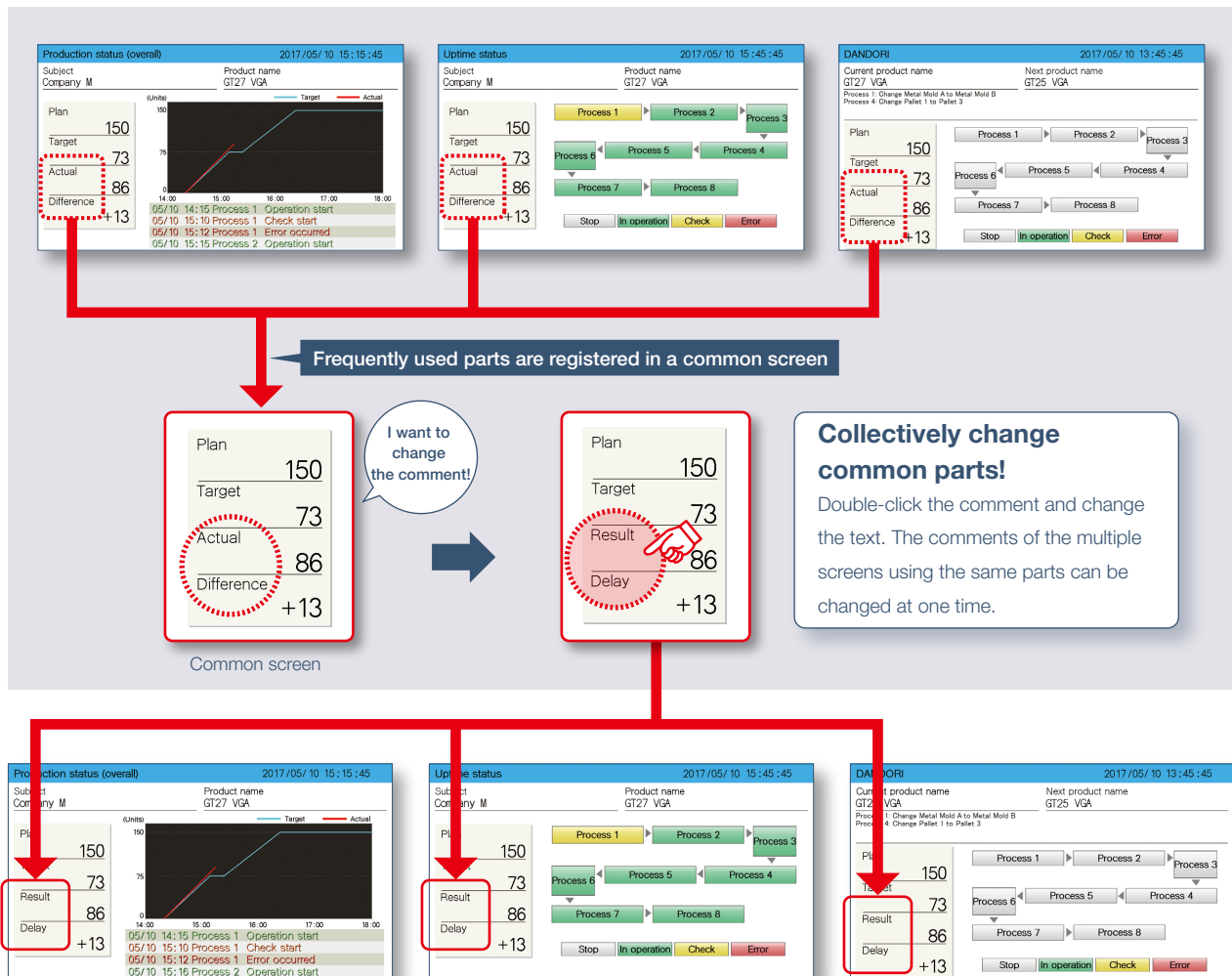
## Easily change template screens collectively!

## Template screen/GT Works3

In template screens, parts used in multiple screens are registered as common parts so that the displayed information can be changed collectively.

2

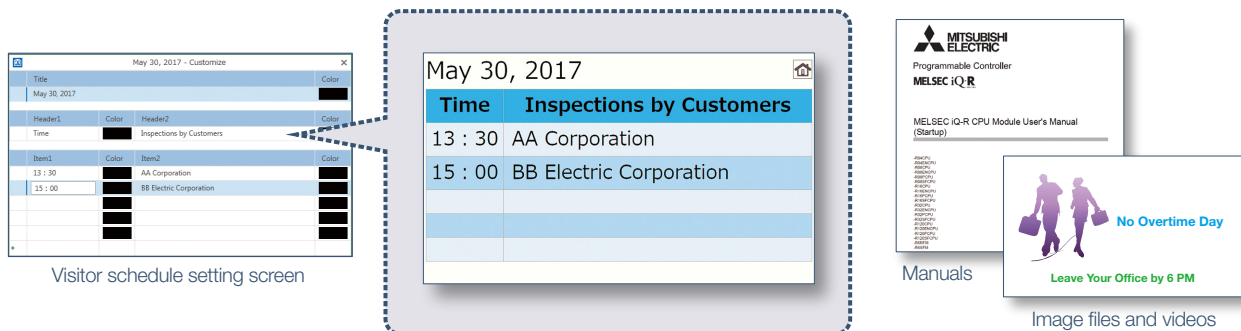
Easily create and customize screens!



## Easy display setting of signage screens! (bulletin boards and others)

## Contents Publisher

By displaying the visitor schedule, notifications, and equipment maintenance notifications on signage screens (bulletin board and others), information can be given timely. Displayed information is set using the Contents Publisher\*.



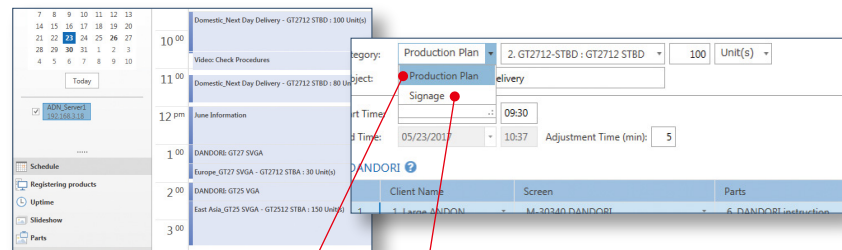
\* Contents Publisher is a tool to configure the ANDON system, which easily updates schedules and information on a bulletin board without technical knowledge of programming.

### 3 Easily operate at the production site!

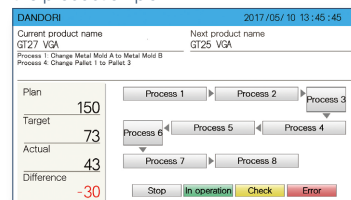
Using the Contents Publisher, it is possible to set the contents (such as production plan, uptime status, and messages) to be displayed on the ANDON monitor easily.

#### Setting schedule

You can easily set up the DANDORI instruction screen according to the production plan and the screen you want to display on the signage screen (bulletin board, etc.).



Set a display screen that matches the production plan.



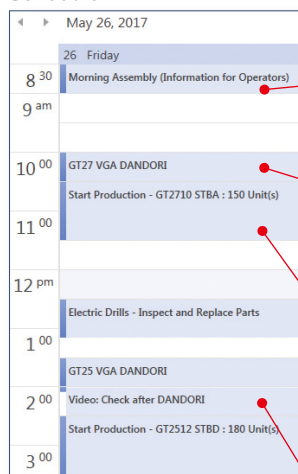
Set a bulletin board to be displayed on a signage.

May 30, 2017	
Time	Inspections by Customers
13 : 30	AA Corporation
15 : 00	BB Electric Corporation

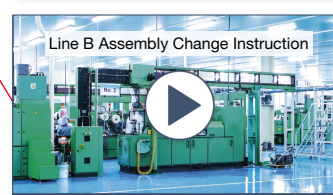
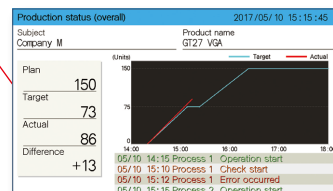
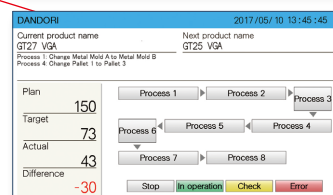
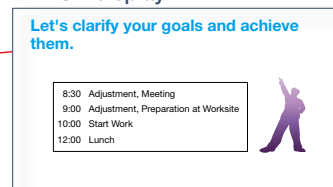
#### Image of setting schedule and ANDON display

According to the schedule settings, the ANDON display is switched in order.

##### Schedule



##### ANDON display



##### Signage screen

Displays a bulletin board for messages and operating instruction text.

##### DANDORI screen

Displays the product name and details of DANDORI.

##### Production status screen

Displays the difference between the target quantity and production result in a graph (progress chart). Also, events and alarm occurrence status are listed.

##### Slideshow

Displays multiple screens such as a product image and operation procedure video in turn in certain intervals.

## Contents Publisher

The ANDON screen display can be set and changed using easy settings of Contents Publisher even without programming knowledge for configuring the ANDON system.

[Contents](#)
[Publisher](#)
[Quick Start Guide](#)
[Movie](#)




## 1) Registering GOT

Register the information of GOT, which is the server that manages ANDON.

GOT registration screen

**Project Data**

CATemp\NANDON\AP30-ADN001AA-GT2708V\_1000A.GTX

 **GOT Information**

GOT Name: ADN\_Server\_Line5

GOT IP Address: 192.168.3.18

Peripheral S/W Communication Port No.: 5015

Num. of Clients: 5

## 2) Registering product information

Register the information of a product to be produced.

In addition to directly inputting information to Contents Publisher, you can also export information to an Excel file (.xlsx), edit product information collectively, and then import the data.

Input screen of Contents Publisher

[illegible]

Exported Excel file

Exporting information from  
Contents Publisher

File Format Version: 1.0					
No.	Category	Product Type	Product Name	Setup Time (min)	Cycle Time (sec)
1	GOT	GT2712-STBA	GT2712 STBA	10	25
2	GOT	GT2712-STBD	GT2712 STBD	10	25
3	GOT	GT2710-STBA	GT2710 STBA	10	20
4	GOT	GT2710-STBD	GT2710 STBD	10	20
5	GOT	GT2512-STBA	GT2512 STBA	10	20
6	GOT	GT2512-STBD	GT2512 STBD	10	20

### 3) Setting uptime

Set the uptime pattern (working hours, rest period and others) of the production site for a day and for a week.

### Uptime pattern for a day

5 Normal Operating Day - Uptime Pattern List

File Home

New Uptime Pattern Save and close Duplicate Action Delete

New Action

Uptime Pattern

1 Normal Operating Day

2 Early Shift Only

3 Late Shift Only

4 24 Hour Operation

5 Normal Operating Day

6 Normal = 2 Hours

08 09 10 11 12 13 14 15 16 17 18 19

Start Time	End Time
08:30	10:20
10:30	12:00
13:00	14:50
15:00	17:00

Uptime - Production

Uptime Pattern List

Uptime

ADK\_Serve1  
08:30-18:00

Day	Uptime Pattern
Mon	5 Normal Operation
Tue	5 Normal Operation
Wed	5 Normal Operation
Thu	6 Normal = 2 Hours
Fri	5 Normal Operation
Sat	0 Stop
Sun	0 Stop

Schedule

Registering products

Uptime

Shutdown

Break

### Uptime pattern for a week

The screenshot shows the 'Update' application window. The title bar reads 'Update - Production Plan\_20170720~apps - Contents Publisher'. The interface includes a sidebar with tabs: 'File', 'Home', 'Update Pattern List', and 'Update Pattern'. The 'Update Pattern List' tab is active, displaying a table with the following columns: 'Day', 'Update Pattern', and 'Update Status'. The table lists update patterns for each day of the week, including normal operating days, a 2-hour shift on Thursday, and stop times on Saturday and Sunday. Each 'Update Status' cell contains a timeline visualization showing the update period as a shaded bar across a 24-hour grid.

Day	Update Pattern	Update Status
Mon	5 Normal Operating Day	08 09 10 11 12 13 14 15 16 17 18 19 20 21 22 23 00 01 02 03 04 05 06 07 08
Tue	5 Normal Operating Day	08 09 10 11 12 13 14 15 16 17 18 19 20 21 22 23 00 01 02 03 04 05 06 07 08
Wed	5 Normal Operating Day	08 09 10 11 12 13 14 15 16 17 18 19 20 21 22 23 00 01 02 03 04 05 06 07 08
Thu	6 Normal + 2 Hours	08 09 10 11 12 13 14 15 16 17 18 19 20 21 22 23 00 01 02 03 04 05 06 07 08
Fri	5 Normal Operating Day	08 09 10 11 12 13 14 15 16 17 18 19 20 21 22 23 00 01 02 03 04 05 06 07 08
Sat	0 Stop	08 09 10 11 12 13 14 15 16 17 18 19 20 21 22 23 00 01 02 03 04 05 06 07 08
Sun	0 Stop	08 09 10 11 12 13 14 15 16 17 18 19 20 21 22 23 00 01 02 03 04 05 06 07 08

#### 4) Setting schedule

Set the schedule based on the production plan. The adjustment time can be set because the time required for adjustment work is different between skilled and unskilled workers.

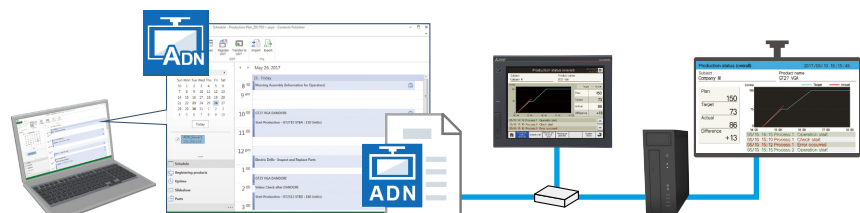
## Schedule

The screenshot shows the 'Setting schedule' window. On the left is a calendar grid with the date 2023/08/31 selected. The main area lists tasks: 'Domestic\_Next Day Delivery - GT2712 STBD : 100 Units', 'Video Check Procedures', 'Domestic\_Next Day Delivery - GT2712 STBD : 80 Units', 'June Information', 'DANDORI GT27 SVGA', 'Europe\_GT27 SVGA - GT2712 STBA : 30 Units', 'DANDORI GT25 VGA', and 'Ent Asia\_GT25 SVGA - GT2512 STBA : 150 Units'. Below the list is a table with columns 'Client Name', 'Screen', and 'Parts'. The table contains two rows: '1 - 1 Europe DANDORI' and '1 - M-2024D DANDORI'. A red box highlights the 'Adjustment Time (min):' field, which is set to 5. A red line points from this field to the 'DANDORI' task in the table.

Set Adjustment Time (min) [NEW]

## 5) Transferring schedule

Transfer the set schedule to the GOT and realize ANDON display.



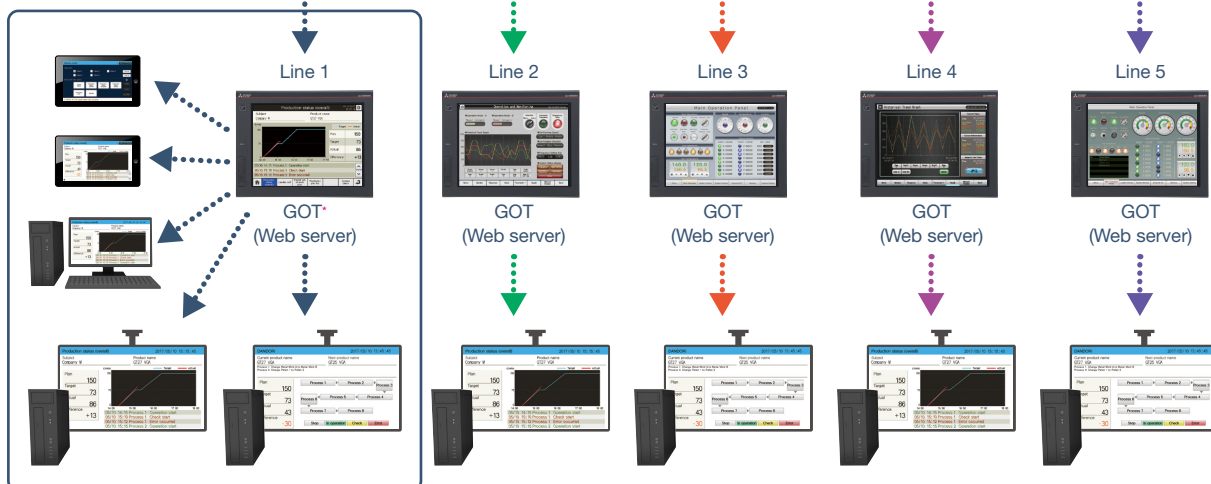
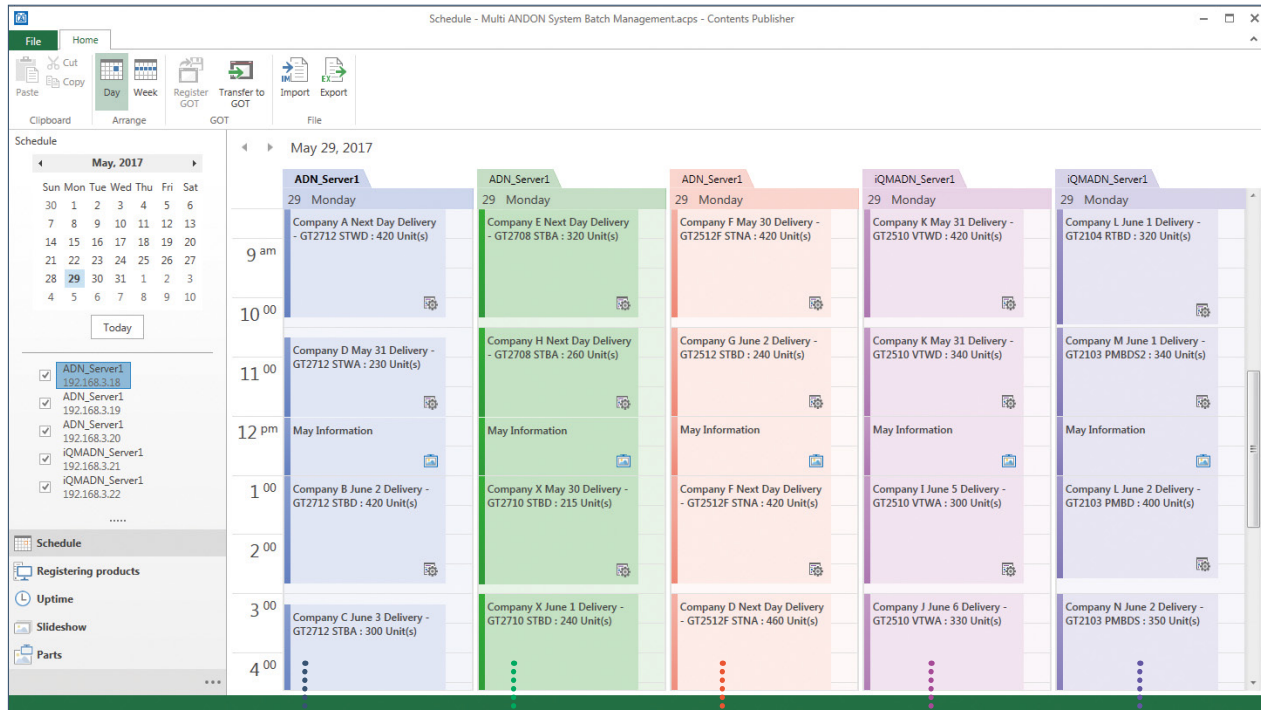


## Manage multiple ANDON systems collectively!

## Contents Publisher

By registering multiple ANDON GOTs, screens displayed on ANDON can be managed collectively. (Up to five GOTs)

Contents Publisher manages multiple ANDON GOTs that are installed in the same equipment or the same production line so that it is possible to collectively reflect changes of information about production plans and bulletin boards.



\* Up to five clients (display terminals) can display ANDON data through one GOT (Web server).

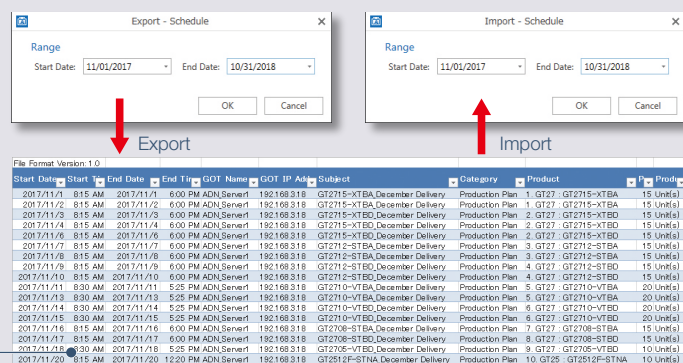


**Tip!**

When you want to change the schedule (production plan or signage screens) collectively, you can export the schedule and collectively change it in Excel.

The target range can be specified by date so that the schedule of an arbitrary period (maximum 1 year) can be changed at a time. **[NEW]**

Exported Excel file



3

Easily operate at the production site!

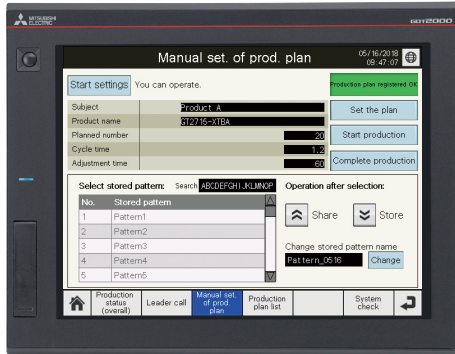
13

Enter the production plan from the on-site GOT **NEW**

Template screen

On the production plan manual settings screen, the production plan can be entered from the on-site GOT. It can be set per product via a barcode reader or programmable controller devices. Frequently used patterns can also be registered.

Production plan manual settings screen



- Set via a barcode reader or programmable controller devices



Barcode reader



Programmable controller

- Set from the barcode reader connected to a tablet (via the GOT Mobile function)



Tablet



Barcode reader

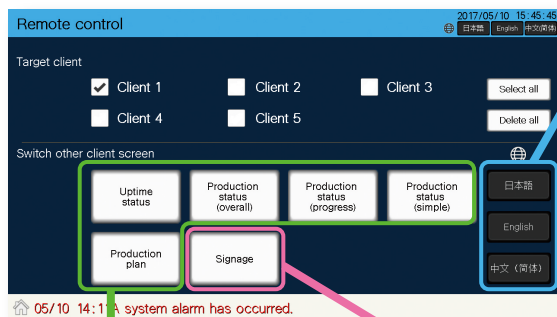
\* In addition to the above manual setting methods, the production plan can also be set or changed using Contents Publisher or ANDON DB (database). Note that these methods cannot be used with manual setting methods.

## Switch ANDON screens by remote control operation from a tablet!

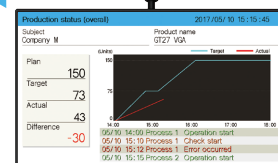
Template screen

The display screen of the specified ANDON monitor and the display language can be switched by using remote control operation.

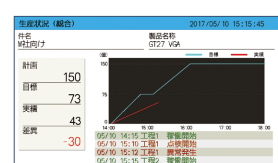
Remote control screen for tablet



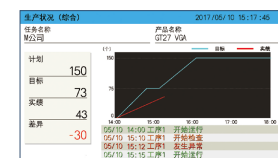
- Language switching



English



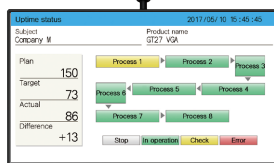
Japanese



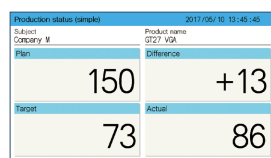
Chinese (Simplified)



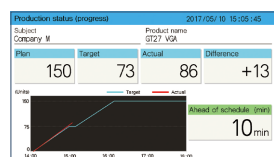
- Screen switching



Uptime status screen



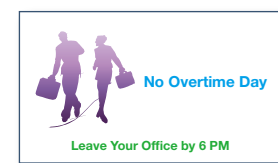
Production status (simple) screen



Production status (progress) screen



- Signage screen switching



Signage screen (image)

Time	Inspections by Customers
13:30	AA Corporation
15:00	BB Electric Corporation

Signage screen (bulletin board)



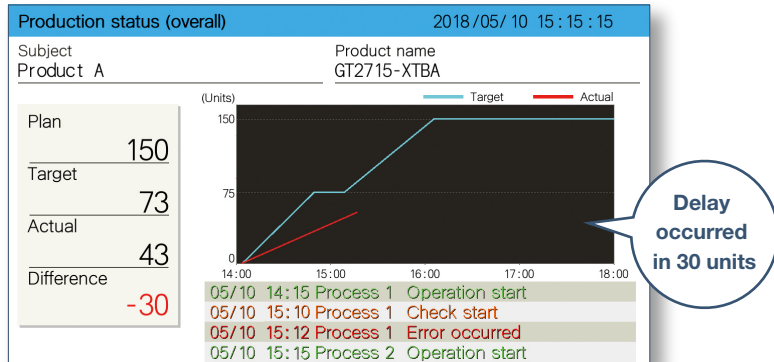
Signage screen (video)



## Display production results in numerical values and in a graph (progress chart)

Template screen

The production status (overall) screen displays the production quantity planned value, target value, actual value, and the difference between the target and actual values numerically. Also, delays can be detected timely because the difference between the target value and production results can be checked graphically on a progress chart.



### Visualizing problems

Production delays against the target and alarm occurrence status can be checked on the progress chart.

### Planning measures

This screen is helpful to plan measures such as changing the production plan.

## Display the production plans and results of multiple products on one screen **NEW**

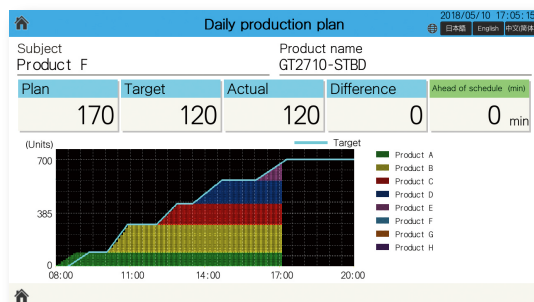
Template screen

If multiple products are manufactured on one day, the production plans and results of the day can be displayed as one progress chart. On the production plan list screen, the production plans and results of a day can be confirmed on one screen.

Production plan of a day

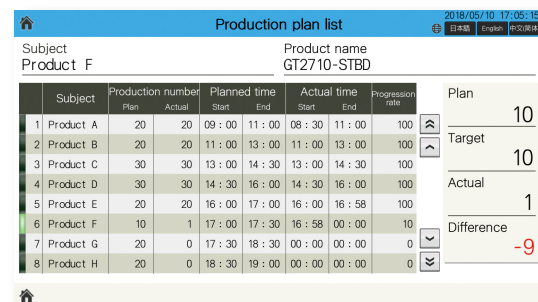
Subject	Product A	Product B	Product C	Product D	Product E	Product F
Product name	GT2715-XTBA	GT2715-XTBD	GT2712-STBA	GT2712-STBD	GT2710-STBA	GT2710-STBD
Start date	2018/5/10	2018/5/10	2018/5/10	2018/5/10	2018/5/10	2018/5/10
Start time	9:00	11:00	13:00	14:30	16:00	17:00
Number of production	20	20	30	30	20	10
Cycle time (s)	360	360	180	180	180	180

Daily production plan screen



This screen displays multiple products' production plans and production results as numerical values and in a progress chart. The screen shows the information of eight products per day.

Production plan list screen



This screen displays the status of that day's production plan. Displays the details for production plan name, number of production, actual time and progression rate.

## 4 Visualize production from a remote location!

### Visualization is realized throughout the production site!

The GOT Mobile function of GOT2000 realizes visualization at production sites and offices. By grasping the occurrence of a problem timely and performing smooth troubleshooting, you can improve the operation rate of equipment and productivity.

#### Production site

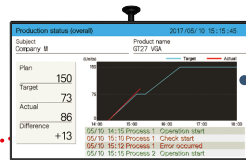
##### Operating instructions are visible on site

Workers at the production site can check operation procedures on the operating instruction monitor.

Operating instruction monitor  
(Web browser)

Worker Site

GOT2000  
(Web server)



ANDON monitor  
(Web browser)

##### The production status is visible on site

By displaying the production status on the ANDON monitor at the production site, all workers can share information.

#### Office

Office personal computer  
(Web browser)

Group leader Office

##### Production is visible on a tablet

By displaying the production status, alarm history, and other information on the tablet at hand, the on-site supervisor (line leader) can grasp the problem timely and take corrective actions quickly.

Mobile terminal such as a tablet  
(Web browser)

Line leader Site

##### Production is visible at the office

At the office, the group leader can check the production plan, results, alarm history, and other information on a personal computer.

### Up to five information devices can simultaneously access one GOT!

**GOT Mobile**

With the GOT Mobile function, the status of equipment can be grasped from a remote location using a web browser on a tablet.

Since five information devices can access the GOT at the same time and different screens can be displayed and operated respectively, it allows you to work (check/set) efficiently.

#### Production site

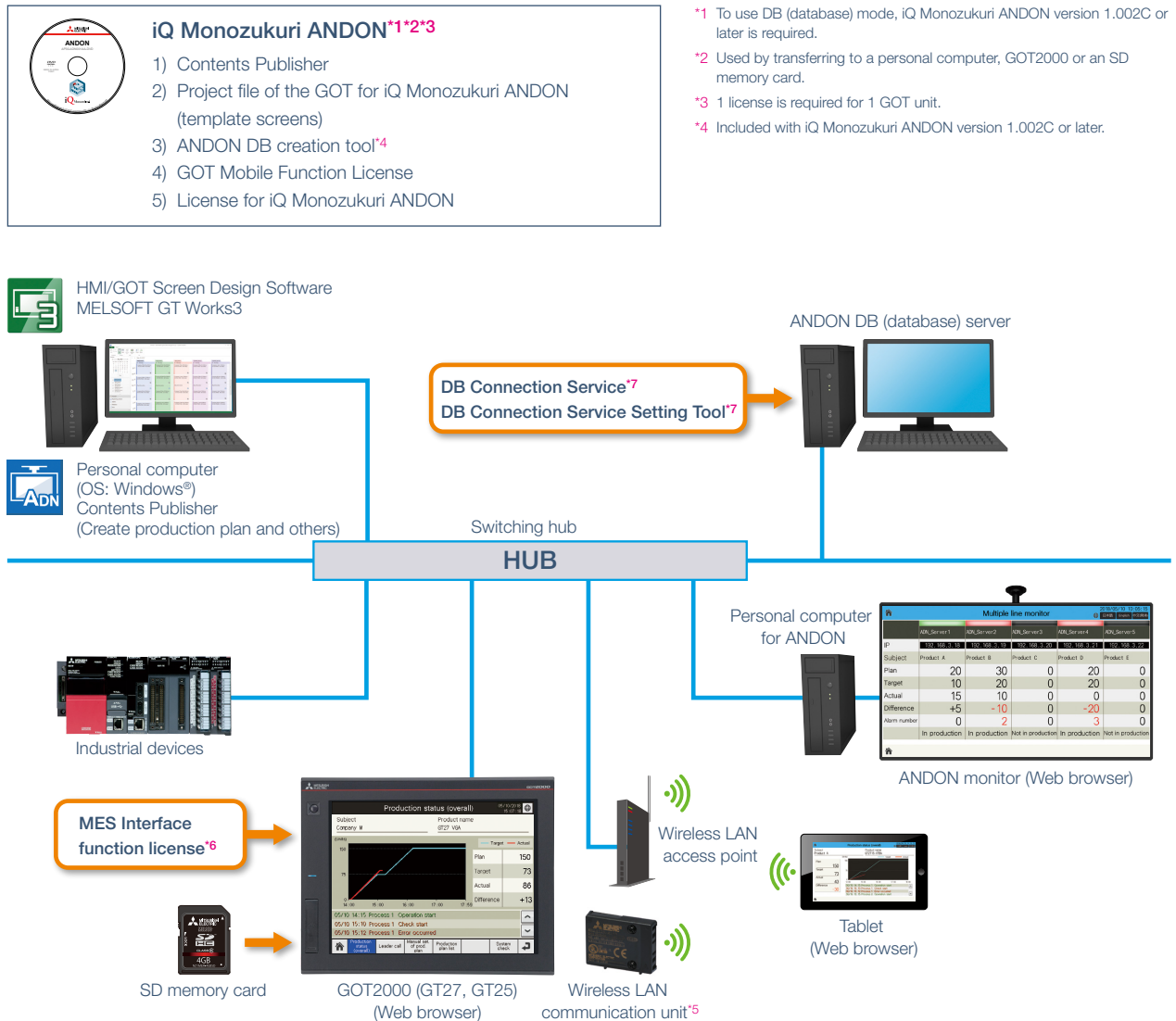


\* Cannot be used with GT2505 or GT25 handy models.





## System configuration example &lt;DB (database) mode\*1 [NEW]&gt;



## Operating environment of ANDON DB (database) server

Item	Description	
Personal computer	Microsoft® SQL Server® Personal computer to operate 2016 Service Pack 1 Express With Advanced Services (64-bit version only)	
	CPU	Intel® Core™ 4 Core, 2 GHz or more recommended
	Required memory	4 GB or more
Hard disk space	20 GB or more	
OS (64-bit) (English version, Simplified Chinese version, Japanese version)	Microsoft® SQL Server® OS that supports 2016 Service Pack 1 Express With Advanced Services	

## Product list

### ● Application packages

Product name	Model	Description
iQ Monozukuri ANDON <sup>*1</sup>	AP30-ADN001AA-MA	1 license
	AP30-ADN001AA-MB	5 licenses
	AP30-ADN001AA-MC	10 licenses
	AP30-ADN001AA-MD	15 licenses
	AP30-ADN001AA-ME	20 licenses

<sup>\*1</sup> Contents Publisher, project file of the GOT for iQ Monozukuri ANDON, GOT Mobile function license, and the iQ Monozukuri ANDON license are included.

### ● Equipment necessary for system configuration: Products prepared by users

**GOT: Any one of the following is required.**

Product name	Model	Screen size
GT27	GT2715	15" XGA
	GT2715-XTBD	
	GT2712-STBA	12.1" SVGA
	GT2712-STBD	
	GT2712-STWA	
	GT2712-STWD <sup>*1</sup>	
	GT2710-STBA	10.4" SVGA
	GT2710-STBD	
	GT2710-VTBA	10.4" VGA
	GT2710-VTBD	
	GT2710-VTWA	
	GT2710-VTWD <sup>*1</sup>	
	GT2708-STBA	8.4" SVGA
	GT2708-STBD	
GT25	GT2708-VTBA	8.4" VGA
	GT2708-VTBD	
	GT2705-VTBD	5.7" VGA
	GT2512-STBA	12.1" SVGA
	GT2512-STBD	
	GT2512F-STNA	
	GT2512F-STND	
	GT2510-VTBA	10.4" VGA
	GT2510-VTBD	
	GT2510-VTWA	
	GT2510-VTWD <sup>*1</sup>	
	GT2510F-VTNA	
	GT2510F-VTND	
	GT2508-VTBA	8.4" VGA
	GT2508-VTBD	
	GT2508-VTWA	
	GT2508-VTWD <sup>*1</sup>	
	GT2508F-VTNA	
	GT2508F-VTND	
	GT2505-VTBD	5.7" VGA
GT25 (Wide screen)	GT2510	10.1" WXGA
	GT2510-WXTSD	
	GT2507	7" WVGA
GT25 (Rugged)	GT2507	7" WVGA
	GT2507T	7" WVGA
GT25 (Handy)	GT2506HS	6.5" VGA
	GT2505HS	5.7" VGA

<sup>\*1</sup> To conform to ATEX and KCs standards, options (protective seat and special fitting) are required separately. Communication units and option units cannot be used. For the details, please refer to the Technical Bulletin "GOT2000 Series in Compliance with the ATEX Directive and KCs Certification Requirements" No. GOT-A-0101.

**Software: Any one of the following is required.**

Product name	Model
HMI/GOT Screen	SW1DND-GTWK3-E (English version, standard license product)
Design Software	SW1DND-GTWK3-EA (English version, volume license product <sup>*1</sup> <sup>*3</sup> )
MELSOFT GT Works3	SW1DND-GTWK3-EAZ (English version, additional license product <sup>*1</sup> <sup>*2</sup> )

<sup>\*1</sup> The desired number of licenses (2 or more) can be purchased. For details, please contact your local sales office.

<sup>\*2</sup> This product does not include the DVD-ROM. Only the license certificate with the product ID number is issued.

<sup>\*3</sup> Volume license product is not sold separately and should be purchased with the standard license product.

**Memory card: Any one of the following is required.**

Product name	Model	Specifications
SD memory card	NZ1MEM-2GBSD	SD memory card for the GOT, 2 GB
	NZ1MEM-4GBSD	SDHC memory card for the GOT, 4 GB
	NZ1MEM-8GBSD	SDHC memory card for the GOT, 8 GB
	NZ1MEM-16GBSD	SDHC memory card for the GOT, 16 GB

**Other options: Prepared as needed**

Product name	Model
Wireless LAN communication unit <sup>*1</sup> <sup>*6</sup>	GT25-WLAN
Ethernet communication unit <sup>*2</sup> <sup>*3</sup> <sup>*6</sup> <sup>*7</sup>	GT25-J71E71-100
External I/O unit <sup>*3</sup> <sup>*6</sup> <sup>*7</sup>	GT15-DIOR <sup>*4</sup>
	GT15-DIO <sup>*5</sup>

<sup>\*1</sup> Data transfer in the wireless LAN communication may not be as stable as that in the cable communication because a packet loss may occur depending on the surrounding environment and installation location. Make sure to check operation before using the product. Available countries vary depending on the hardware version. For the details, please refer to GOT2000 Series Wireless LAN Communication Unit User's Manual IB(NA)-0800522.

<sup>\*2</sup> GT25 wide screen models and GT2507T have two built-in Ethernet ports so that the unit is not required.

<sup>\*3</sup> Cannot be used with GT25 wide screen models.

<sup>\*4</sup> GT15-DIOR is a negative common input/source type output.

<sup>\*5</sup> GT15-DIO is a positive common input/sync type output.

<sup>\*6</sup> Cannot be used with GT2505 or GT25 handy models.

<sup>\*7</sup> Cannot be used with GT2507T.

**License: Required to use DB (database) mode<sup>\*1</sup>**

Product name	Model	Description
MES Interface function license <sup>*2</sup>	GT25-MESIFKEY-1	1 license
	GT25-MESIFKEY-5	5 licenses
	GT25-MESIFKEY-10	10 licenses
	GT25-MESIFKEY-20	20 licenses

<sup>\*1</sup> To use DB (database) mode, iQ Monozukuri ANDON version 1.002C or later is required.

<sup>\*2</sup> 1 license is required for 1 GOT unit.

The actual color may differ slightly from the pictures in this catalog.  
The actual display may differ from what are shown on GOT screen images.

#### ⚠ Precautions for safe use

To use the products given in this publication properly, always read the relevant manuals before beginning operation.

#### Trademarks and registered trademarks

All product and company names used herein are either trademarks or registered trademarks of their respective owners.

# Global Partner. Local Friend.

## American Offices

<b>USA</b> <b>Mitsubishi Electric Automation, Inc.</b> 500 Corporate Woods Parkway, Vernon Hills, IL 60061, U.S.A. Tel: +1-847-478-2100	<b>Mexico</b> <b>Mitsubishi Electric Automation, Inc.</b> <b>Mexico Branch</b> Mariano Escobedo #69, Col. Zona Industrial, Tlalnepantla Edo. Mexico, C.P.54030 Tel: +52-55-3067-7511	<b>Brazil</b> <b>Mitsubishi Electric do Brasil Comercio e Servicos Ltda.</b> Avenida Adelino Cardana, 293, 21 andar, Bethaville, Barueri SP, Brasil CEP 06401-147 Tel: +55-11-4689-3000
--	---	---

## Asia-Pacific Offices

<b>China</b> <b>Mitsubishi Electric Automation (China) Ltd.</b> No.1386 Hongqiao Road, Mitsubishi Electric Automation Center, Shanghai, China Tel: +86-21-2322-3030	<b>Taiwan</b> <b>SETSUYO ENTERPRISE CO., LTD.</b> 6F, No.105, Wugong 3rd Road, Wugu District, New Taipei City 24889, Taiwan Tel: +886-2-2299-2499	<b>Korea</b> <b>Mitsubishi Electric Automation Korea Co., Ltd.</b> 7F-9F, Gangseo Hangang Xi-tower A, 401, Yangcheon-ro, Gangseo-Gu, Seoul 07528, Korea Tel: +82-2-3660-9530
<b>Singapore</b> <b>Mitsubishi Electric Asia Pte. Ltd.</b> 307 Alexandra Road, Mitsubishi Electric Building, Singapore 159943 Tel: +65-6473-2308	<b>Thailand</b> <b>Mitsubishi Electric Factory Automation</b> <b>(Thailand) Co., Ltd.</b> 12th Floor, SV.City Building, Office Tower 1, No. 896/19 and 20 Rama 3 Road, Kwaeng Bangpongpan, Khet Yannawa, Bangkok 10120, Thailand Tel: +66-2682-6522 to 31	<b>Indonesia</b> <b>PT. Mitsubishi Electric Indonesia</b> Gedung Jaya 11th Floor, J.L. MH. Thamrin No.12, Jakarta Pusat 10340, Indonesia Tel: +62-21-3192-6461
<b>Vietnam</b> <b>Mitsubishi Electric Vietnam Co., LTD.</b> <b>Ho Chi Minh Head Office</b> Unit 01-04, 10th Floor, Vincom Center, 72 Le Thanh Ton Street, District 1, Ho Chi Minh City, Vietnam Tel: +84-8-3910-5945	<b>India</b> <b>Mitsubishi Electric India Pvt. Ltd.</b> <b>Pune Branch</b> Emerald House, EL -3, J Block, M.I.D.C., Bhosari, Pune - 411026, Maharashtra, India Tel: +91-20-2710-2000	<b>Australia</b> <b>Mitsubishi Electric Australia Pty. Ltd.</b> 348 Victoria Road, P.O. Box 11, Rydalmere, N.S.W. 2116, Australia Tel: +61-2-9684-7777

## European Offices

<b>Germany</b> <b>Mitsubishi Electric Europe B.V.</b> <b>German Branch</b> Mitsubishi-Electric-Platz 1, 40882 Ratingen, Germany Tel: +49-2102-486-0	<b>UK</b> <b>Mitsubishi Electric Europe B.V.</b> <b>UK Branch</b> Travellers Lane, Hatfield, Hertfordshire, AL10 8XB, U.K. Tel: +44-1707-28-8780	<b>Italy</b> <b>Mitsubishi Electric Europe B.V.</b> <b>Italian Branch</b> Centro Direzionale Colleoni - Palazzo Sirio, Viale Colleoni 7, Agrate Brianza (MB), Italy Tel: +39-039-60531
<b>Spain</b> <b>Mitsubishi Electric Europe B.V.</b> <b>Spanish Branch</b> Carretera de Rubi 76-80-Apdo.420, 08190 Sant Cugat del Valles (Barcelona), Spain Tel: +34-935-65-3131	<b>France</b> <b>Mitsubishi Electric Europe B.V.</b> <b>French Branch</b> 25, Boulevard des Bouvets, 92741 Nanterre Cedex, France Tel: +33-1-55-68-55-68	<b>Czech</b> <b>Mitsubishi Electric Europe B.V.</b> <b>Czech Branch</b> Avenir Business Park, Radlicka 751/113e, 158 00 Praha 5, Czech Republic Tel: +420-251-551-470
<b>Turkey</b> <b>Mitsubishi Electric Turkey A.S.</b> <b>Umraniye Branch</b> Serifali Mahallesi Nutuk Sokak No:5, TR-34775 Umraniye / Istanbul, Turkey Tel: +90-216-526-3990	<b>Poland</b> <b>Mitsubishi Electric Europe B.V.</b> <b>Polish Branch</b> ul. Krakowska 50, 32-083 Balice, Poland Tel: +48-12-347-65-00	<b>Russia</b> <b>Mitsubishi Electric (Russia) LLC</b> <b>St. Petersburg Branch</b> Piskarevsky pr. 2, bld 2, lit "Sch", BC "Benua", office 720; RU-195027 St. Petersburg, Russia Tel: +7-812-633-3497
<b>South Africa</b> <b>Adroit Technologies</b> 20 Waterford Office Park, 189 Witkoppen Road, Fourways, Johannesburg, South Africa Tel: +27-11-658-8100		

The release date varies depending on the product and your region. For details, please contact your local sales office.

## MITSUBISHI ELECTRIC CORPORATION

HEAD OFFICE: TOKYO BLDG., 2-7-3, MARUNOUCHI, CHIYODA-KU, TOKYO 100-8310, JAPAN  
 NAGOYA WORKS: 1-14, YADA-MINAMI 5, HIGASHI-KU, NAGOYA, JAPAN